



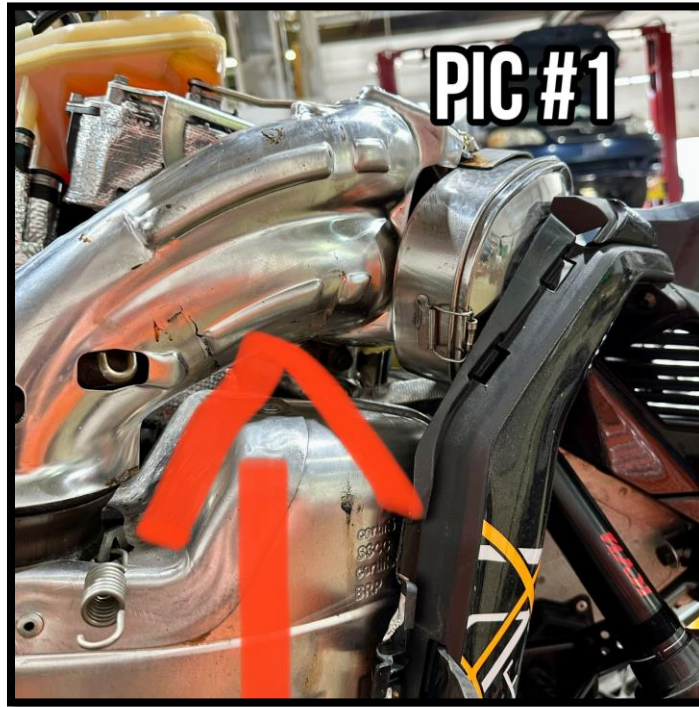
***WWW.BUSHPUSHERDESIGN.COM***

**SKI-DOO G5 TURBO COOKER INSTALLATION  
INSTRUCTIONS**

---

## **SKI-DOO G5 TURBO COOKER INSTALLATION INSTRUCTIONS**

- 1. Remove right hand panel & hood.**
- 2. Remove tin around exhaust pipe (PIC#1)**



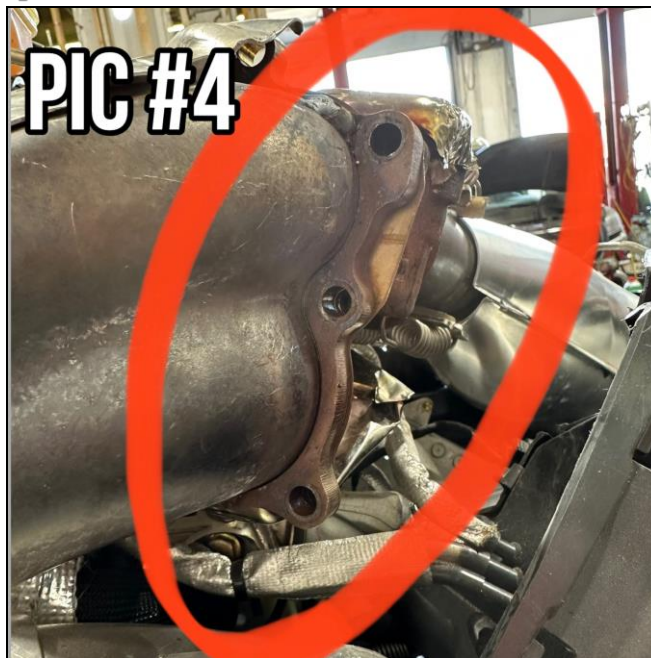
- 3. Trim tin following body line. Allowing access to mount bolts for installation and greater heat transfer. (PIC#2)**



4. **Trim Turbo tin – pull out some insulation and roll tin edge over itself. This allows maximum heat to cooker pot. (PIC#3)**  
***\*Tip: A utility knife & metal scissors work great for this process!***



5. **Remove 3 bolts from Turbo. (PIC# 4)**  
**8mm - 12 point on Gen 5**





6. Apply **RED** Loctite to stock bolts.
7. Mount **Cooker plate** using the stock bolts and torque using the **Sequence and Torque specifications outlined in PIC#5**

PIC #5


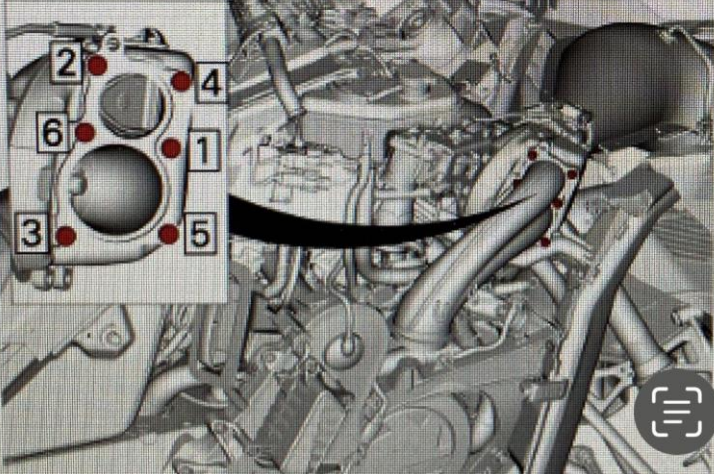
5. Remove the exhaust pipe.

**Installing the Exhaust Pipe**

The installation is the reverse of the removal procedure. However, pay attention to the following.

1. Tighten the exhaust pipe to specification, as per the following sequence.

Tightening Torque		
Exhaust pipe screw	Step 1 (1 to 6)	4.5 ± 1.5 Nm (40 ± 13 lbf-in)
	Step 2 (1 to 6)	28 ± 1 Nm (21 ± 1 lbf-ft)
	Step 3 (1 to 3 only)	28 ± 1 Nm (21 ± 1 lbf-ft)

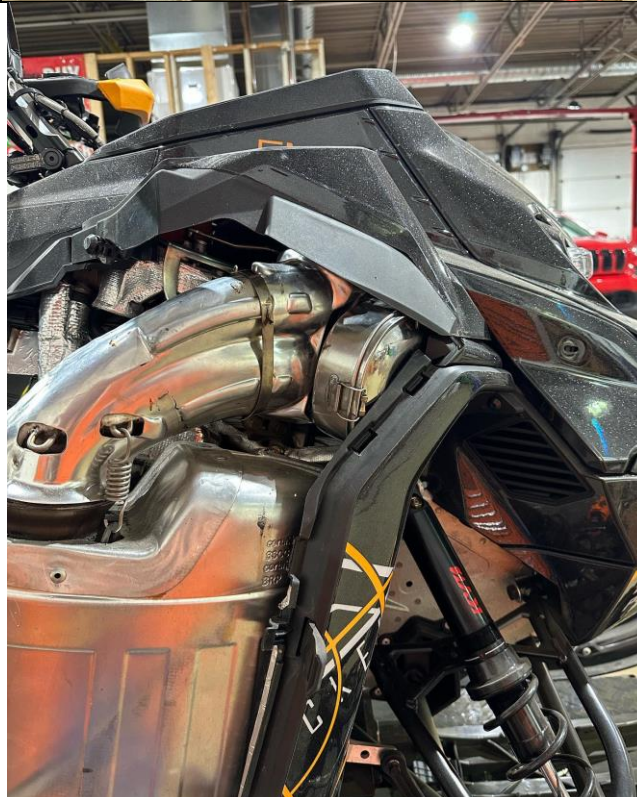



**8. Trim plastic slightly along top edge (PIC# 6a & 6b)**





9. Re-attach previously trimmed exhaust shroud
10. Add small piece of included heat tape to panel edge (PIC# 7)



**11. If using factory heat shield, refer to PIC#8 on where to trim.**



**12. Re-install hood and side panels back in place.**

**13. Fill Cooker Pot with your favourite food, slide into mount plate & enjoy!**

**\*\*PRO TIP: Parchment paper transfers heat to food much better than tin foil\*\***